



Drum Mead, Hampshire

**Asking Price £280,000**



**Williams of Petersfield**

INDEPENDENT ESTATE AGENTS



## Drum Mead, Hampshire

A wonderful two bedroom house in Drum Mead. Ideally located with quick access to the A3 and just a short walk from the mainline train station, this property has No Onward Chain.

The entrance provides an area for jackets and shoes, leading to the spacious open-plan living area that seamlessly combines a living space with a dedicated dining area. The well-appointed kitchen features a stylish breakfast bar, plenty of worktop space and direct access to your private garden, ideal for outdoor dining.

Both bedrooms are generously sized double rooms, with the first bedroom offering ample built-in wardrobe space. The family bathroom includes a corner bath.

Outside, the garden is a low-maintenance haven with a patio area perfect for entertaining and a gravel section for easy upkeep. A shed at the rear provides extra storage.

This home enjoys an allocated parking space.

Council Tax - C  
EPC - C





Location

Petersfield is a market town and civil parish in the East Hampshire district of Hampshire. It is 17 miles north of Portsmouth on the A3 road. The town has its own railway station on the Portsmouth direct line, the mainline rail link- connecting Portsmouth and London (Waterloo). The town is situated on the northern slopes of the South Downs. Petersfield lies wholly within an area of outstanding natural beauty and within the boundary of the South Downs National Park. The town is on the crossroads of the well-used north-south (A3) and east-west (A272) routes and it originally grew as a coach stop on the Portsmouth to London route. Petersfield is twinned with Barentin in France and Warendorf in Germany. Petersfield is a popular location for families, due to the choices of schools available, including; Churchers College, The Petersfield School (TPS) Herne Junior school and a number of infant schools and playgroups nearby. The town centre offers a good selection of shops and facilities, including Waitrose, Tescos and Lidl supermarkets and a mixture of High street brands and local independent businesses. Being within the South Downs National Park there are a plethora of country walks and cycle paths and the jewel in the Town's crown is the Heath & Lake.

Local authority

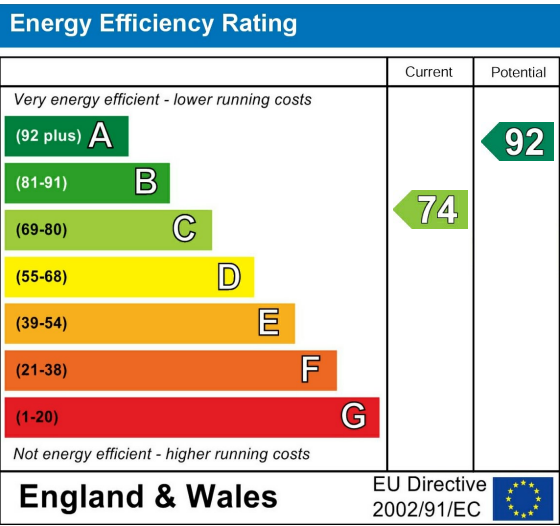
East Hampshire District Council  
Penns Place, Petersfield  
Hampshire, GU31 4EX  
01730 266551

Additional Information

All main services

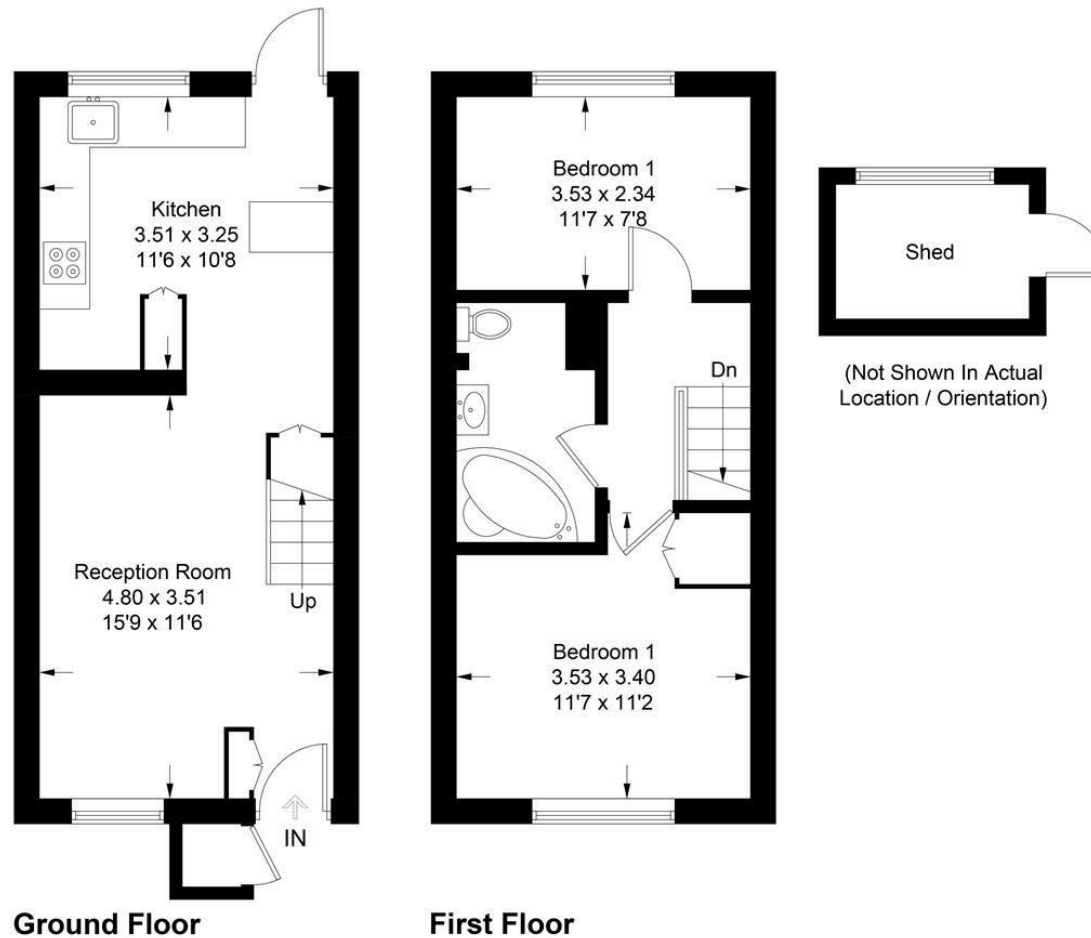
Tenure

Freehold



## Drum Mead, GU32 3AQ

Approximate Gross Internal Area = 58.7 sq m / 632 sq ft  
(Excluding Shed)



These plans are for representation purposes only as defined by RICS - Code of Measuring Practice. Not to Scale.  
Produced for Williams of Petersfield. (ID1122515)

### Williams of Petersfield

6 - 8 College Street, Petersfield, Hampshire, GU31 4AD

01730 233333 sales@williamsopfetersfield.co.uk www.williamsopfetersfield.co.uk

The Property Misdescriptions Act 1991: The Agent has not tested any apparatus, equipment, fixtures and fittings or services and so cannot verify that they are in working order or fit for the purpose. A buyer is advised to obtain verification from their solicitor or surveyor. References to the tenure of a property are based upon information supplied by the seller. The agent has not had site of the title documents. A buyer is advised to obtain verification from their solicitor. Items shown in photographs are NOT included unless specifically mentioned within the sales particulars. They may however be available by separate negotiation. Buyers must check the availability of any property and make an appointment to view before embarking on any journey to see a property.